

# COMPANY PROFILE

# CONTENTS

1.....	INTRODUCTION
2.....	HEALTH & SAFETY STATMENT
3.....	ENVIRONMENTAL
4.....	COMPANY CHART
5.....	COMPANY INFORMATION
6.....	PROJECTS
7.....	HEALTH & SAFETY POLICY
8.....	RISK ASSESSMENT SAMPLE
9.....	ENVIRONMENTAL POLICY
10.....	EQUAL OPPORTUNITIES POLICY
11.....	CONSTRUCTIONLINE CERTIFICATE
12.....	CONSTRUCTIONLINE NOTATION SCHEDULE
13.....	INSURANCE POLICY
13.....	CONTACT DETAILS

Gilmore UK is a North West London based Construction Company with a growing client base stretching across the whole of London, its boroughs and beyond. As a non confrontational company, we quickly gained a reputation as a company that was flexible to our Client needs and with a strong ownership of our End User Satisfaction with a high emphasis on Performance and Quality.

We are an experienced multi disciplined contractor providing quality Building & Construction solutions to the Commercial and residential Sectors.

Our range of services includes:

- Construction.
- Refurbishment.
- New Build
- Maintenance.
- Concrete cutting.
- Steel Work.
- Roofing
- Plumbing
- Electrical
- Painting & Decorating
- Plastering
- Tiling



All of our management, staff and operatives are fully trained in all aspects of Health & Safety, Environmental issues, Customer Care, Working in Occupied properties and are fully supported by our experienced professional inspectors.

At Gilmore UK Ltd. we pride ourselves on the fact that we have a multicultural workforce and management team who work closely together to provide our clients and residents with a Quality Service that ensures that once a Client engages our service, they will always use us again. Our commitment to Health and Safety, Quality and Customer Care remains the main priority on all projects regardless of the size or value and our Company Ethos automatically lends itself to Partnering.



Gilmore UK Ltd. Is a member in the UK's largest certified pre-qualification organisation, Constructionline.

Gilmore UK Ltd. is a multi-disciplined construction company committed to making sure your project is completed on time, on budget and to the highest standards of workmanship.

With a long-standing reputation for quality and professionalism, we pride ourselves on:  
 Putting health and safety first,  
 exceeding client expectations,  
 forming long term relationships,  
 through integrity and mutual trust,  
 a commitment to sustainability.



Whether a housing association, public sector body or private company, we offer you a proven, quality service for:

- New build and refurbishment projects
- Residential and commercial properties
- Design and build contracts
- Speculative development
- Land acquisition

Safety, quality, outstanding customer satisfaction and all the values associated with being an ethical, responsible and innovative company will guide our company in the 21st century.

## Health & Safety

Gilmore UK Ltd. Regards good health and safety performance as an integral part of good business practice in which we aim to create a safe working environment for all employees and subcontractors via the implementation of our health and safety control measures.

Our health and safety policy has been designed to conduct assessments on the significant health and safety hazards posed by our activities and to ensure that appropriate health and safety arrangements are place to control those hazards.

As an integral part of our commitment to health and safety Gilmore UK Ltd. recognises its obligations:

- To strive for continual improvements within our overall health and safety performance.
- To comply with current legislation.
- To provide and develop a health and safety training programme which promotes the development of employees and subcontractors as a key resource within the Company.
- To provide and develop an organisation with clearly defined responsibilities that actively support risk management and promotes the involvement of all employees and subcontractors in relation to gaining and maintaining health and safety improvements.
- To conduct investigations into accidents and incidents in order to establish the root cause to enable suitable and effective corrective action to be taken.
- To review the health and safety policy at regular intervals in order to reflect the evolving needs of the Company and to ensure that the policy and associated control systems remain suitable and effective.
- To bring the Company health and safety policy to the attention of all employees and ensure that the health and safety policy is available to all interested parties via the Company website.

## Environmental

Gilmore UK Ltd. is committed to adhering to environmental legislation, together with the achievement of continual improvement and prevention of pollution. We are aware of our responsibilities to the community as a whole and have adopted an environmental strategy which is central to our business objectives.

We believe in our responsibility to care and protect the environment. We aim to provide sustainable solutions with our energy efficient construction methods. We place particular emphasis on significant environmental aspects such as waste management for the protection of wildlife and habitats.

We pursue waste management schemes, together with the recycling of waste materials and we specify, where possible, the use of environmentally friendly materials. We are committed to re-using surplus materials on sites. Our transportation initiatives aim to eliminate the environmental impact of disposing of such materials.

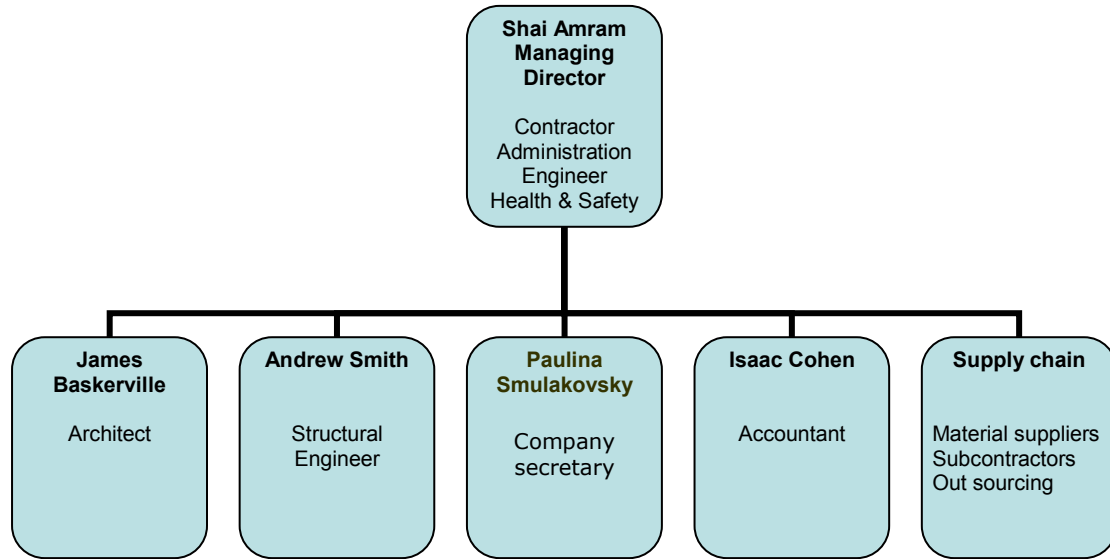
Gilmore UK Ltd. seeks to deal with suppliers and sub-contractors wherever possible that carry their own environmental codes of practice and we actively encourage the adoption of sound environmental principles.

We endeavour to minimise the environmental impact of our operations and reduce, wherever possible, the effects of noise, dust, disturbance and inconvenience to others.

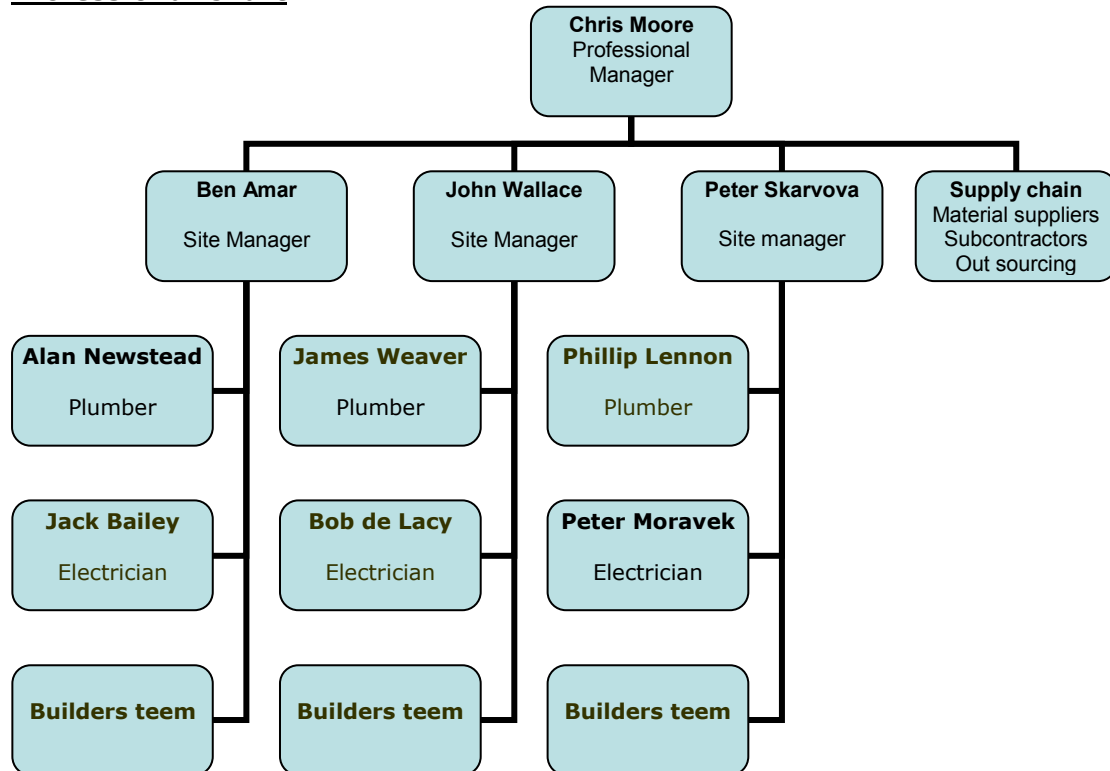
Through continual striving to improve standards throughout our areas of operations by enhancing environmental awareness and commitment amongst our workforce and encourage the adoption of sound environmental principles. We intend to maintain plant and equipment in top-class working condition.

Through continual striving to improve standards, our careful monitoring of every project enables us to maintain consistent standards and protect the environment wherever we work.

**Administration Chart**



**Professional Chart**



**Financial Support & Professional backup for up to £1,000,000 project value**

**Rosh Pro Limited**  
Construction & Development

**Montway Ltd.**  
Construction & Investments

**J H ventures Ltd**  
Property investments & Development

## Projects

**Location:** Golders Green Rd. NW11

**Project:** House to flats conversion

- Internal demolition.
- Re - wiring
- Re - plumbing
- Tiling & flooring
- Plastering
- Painting & decorating



**Value:** £97,000

**Results:**

This project was delivered on time and within budget, with all works completed to a very high standard. We made a real difference to Residents by working in partnership with them and the investments company. Gilmore UK Ltd. consulted and engaged with Residents at early and ongoing stages, and contributed to strong community spirit via high-quality works, undertaken with respect, courtesy and in a tidy manner and enabling the flats to be completely modernised.

**Location:** Chatteris Court, Hendon, London NW4.

**Project:** House to flats conversion & extension.

- Internal demolition
- Roofing
- Re wiring
- Flooring
- Underpinning



**Value:** £223,000

**Results:**

Works were performed to a high standard by Gilmore UK Ltd. and within schedule. Excellent client feedback was received, with a request that future projects are handled by the same site team!

**Location:** Britannia Hotel,  
Hampstead NW6

**Project:** Basement to rooms  
Converting – Drain installation

- Plumbing system installation
- Windows replacement
- Concrete cutting
- Ground work



**Value:** £16,000

**Results**

Our client was delighted with these works. Our tradesmen and operatives were seen as reliable and work well-managed, causing minimal disruption to hotel guests and achieving the high standard required for the project. Attention to detail was strong and Gilmore UK Ltd. worked well with both residents and neighbours, adopting considerate approaches whilst ensuring that all work was carried out safely.

**Location:** Golders green Road  
**Project:** Back extension & roof  
Extension

- Design & Planning permission
- Internal demolition
- Foundation & structural
- Flooring
- Plumbing installation
- Electricity installation
- Roofing



**Value:** £176,000

**Results**

Works were performed to a high standard by Gilmore UK Ltd. and within schedule. Our client was delighted with these works. This project was delivered on time and within budget, with all works completed to a very high standard. Our tradesmen and operatives were seen as reliable and work well-managed, causing minimal disruption to the local neighbours and achieving the high standard required for the project.

**Gilmore UK Ltd.**

31 Golders Way  
London  
NW11 8JX

T: 0800 1182 206

F: 020 8731 6048

E: [info@gilmoreuk.co.uk](mailto:info@gilmoreuk.co.uk)

W: [www.gilmoreuk.co.uk](http://www.gilmoreuk.co.uk)